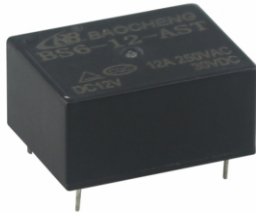


BS6



Product Features

- ◆ High contact load capacity 12A
- ◆ High sensitivity:200mW
- ◆ PCB terminal type
- ◆ Environmental friendly product
- ◆ Flat type
- ◆ Flux tight and sealed types available
- ◆ Outline dimensions:23.0*16.2*10.6mm

 12002069369
  R 50193490

Ordering Information

Model No.	BS6	-24	-A	S	T	W	T-105°C
Nominal Coil Voltage:	5,6,9,12,18,24,48V(DC)						
Contact Form:	A:Normally Open						
S:	Sealed type Nil:Flux tight type						
Contact Material:	AgSnO ₂						
Color:	W:White Nil:Black						
T-105°C:	Ambient Temperature Max.105°C Nil:Ambient Temperature Max.85°C						

Contact Rating

Contact Form	1A	
Contact Material	Ag Alloy	
Contact Rating(Resistive)	12A 250VAC/30VDC	
Switching Power Max.	360W 3000VA	
Switching Voltage Max.	30VDC/277VAC	
Switching Current Max.	12A	
Contact Resistance	≤100mΩ (1A 24VDC)	
Endurance	Electrical	10 ⁵
	Mechanical	10 ⁷

Safety Approval Rating

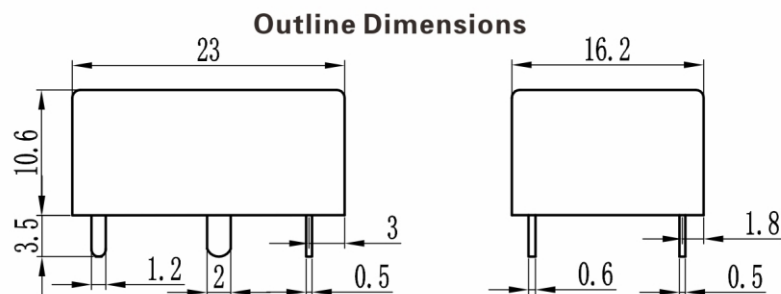
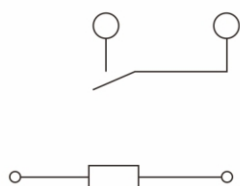
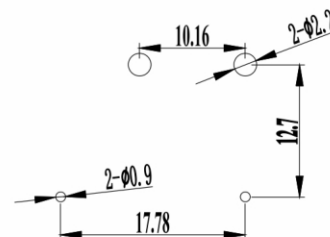
Approval	CQC	TÜV
Load Rating	12A 250VAC 30VDC	12A 250VAC 30VDC

Coil Rating

1A 200mW					
No.	Coil Voltage(VDC)		Coil Resistance R(1 ± 10%) Ω	Pick up Max.(VDC) (80% of Nominal Voltage)	Drop out Min.(VDC) (10% of Nominal Voltage)
	Nominal	Max.			
005-200	5.0	6.5	125	4.00	0.50
006-200	6.0	7.8	180	4.80	0.60
009-200	9.0	11.7	405	7.20	0.90
012-200	12.0	15.6	720	9.60	1.20
018-200	18.0	23.4	1620	14.40	1.80
024-200	24.0	31.2	2880	19.20	2.40
048-200	48.0	52.8	11520	38.40	4.80
1A 360mW					
No.	Coil Voltage(VDC)		Coil Resistance R(1 ± 10%) Ω	Pick up Max. (VDC) (80% of Nominal Voltage)	Drop out Min.(VDC) (10% of Nominal Voltage)
	Nominal	Max.			
005-360	5.0	6.5	69	4.00	0.50
006-360	6.0	7.8	100	4.80	0.60
009-360	9.0	11.7	225	7.20	0.90
012-360	12.0	15.6	400	9.60	1.20
018-360	18.0	23.4	900	14.40	1.80
024-360	24.0	31.2	1600	19.20	2.40
048-360	48.0	52.8	6400	38.40	4.80

Technical Rating

Insulation Resistance		1000M Ω (500VDC)	Item 7 of IEC 60255-5
Dielectric Strength	Between Open Contacts	1000VAC 50HZ 1min	Item 6 of IEC 60255-5
	Between Coil&Contact	2500VAC 50HZ 1min	Item 6 of IEC 60255-5
Operate Time		≤ 10 ms	
Release Time		≤ 5 ms	
Shock Resistance		Operation extremes 10G Damage limits 100G	IEC 68-2-27 Test Ea
Vibration Resistance		10Hz ~ 55Hz double amplitude 1.5mm	IEC 68-2-6 Test Fc
Leading-out Terminal		PCB terminals	IEC 68-2-21 Test Ua1
Ambient Temperature		-40 $^{\circ}$ C ~ 85 $^{\circ}$ C, -40 $^{\circ}$ C ~ 105 $^{\circ}$ C	
Relative Humidity		85% RH	IEC 68-2-3 Test Ca
Weight		8.0g	
Construction		Flux tight type, sealed type	

Outline Dimensions, Wiring Diagram And PCB Layout
Unit:mm

Wiring Diagram(Bottom View)

PCB Layout (Bottom View)


Remarks: (1) In case of no tolerance shown in outline dimension: outline dimension ≤ 1 mm, tolerance should be ± 0.2 mm; outline dimension > 1 mm and ≤ 5 mm, tolerance should be ± 0.3 mm; outline dimension > 5 mm, tolerance should be ± 0.4 mm.
 (2) The tolerance without indicating for PCB layout is always ± 0.1 mm.

Note: Specification and dimensions in this catalogue are for reference only and subject to change without notice.